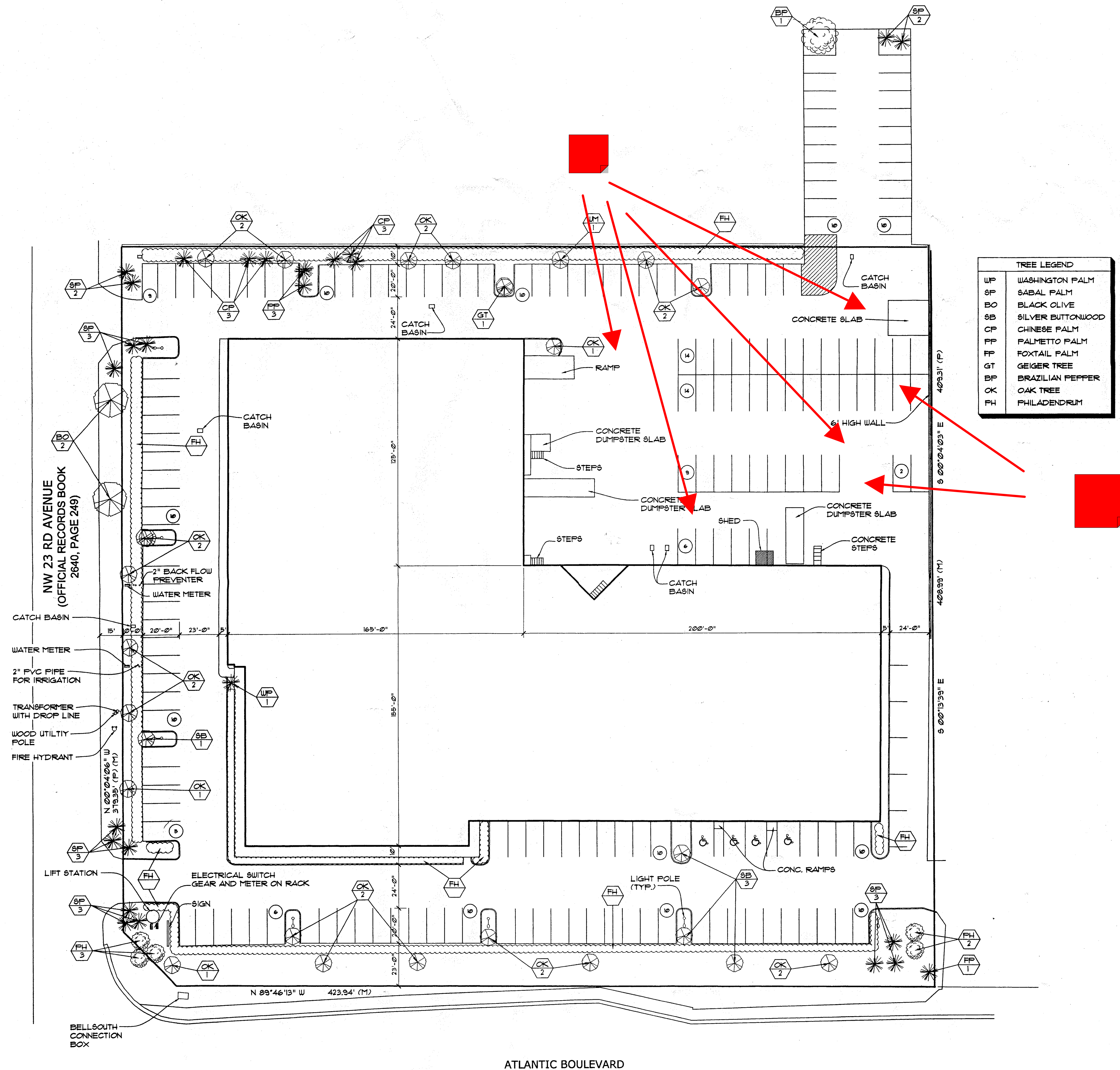


DRC

PZ21-12000052
11/06/2024

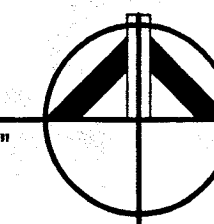
DRC

PZ21-12000052
03/06/2024



EXISTING LANDSCAPE PLAN

SCALE: 1" = 30'-0"



EXISTING LANDSCAPE PLAN

DRAWN	DR
CHECKED	BH
DATE	9-28-10
SCALE	AS NOTED
JOB NO.	2010-43
SHEET	

SP-1

PAUL J. SLATTERY
FLORIDA REGISTRATION # AA000338

CARL'S FURNITURE

POMPANO BEACH, FLORIDA

Associates
ARCHITECTS
PLANNERS

2060 NW BOCA RATON BLVD.

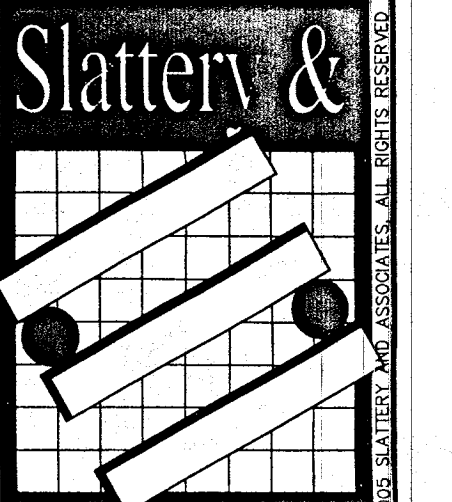
SUITE 2

BOCA RATON, FL 33431

TEL: 561-392-3848

FAX: 561-392-5402

WWW.SLATTERYARCHITECTS.COM



Slattery &
Associates

ARCHITECTS
PLANNERS

2060 NW BOCA RATON BLVD.

SUITE 2

BOCA RATON, FL 33431

TEL: 561-392-3848

FAX: 561-392-5402

WWW.SLATTERYARCHITECTS.COM

REVISIONS	BY	DATE

REVIEWED FOR CODE COMPLIANCE
SUBJECT TO ALL CODES OF THE
CITY OF POMPANO BEACH
BP13-0005303
08/16/13

APPROVED
CITY OF POMPANO BEACH
FLORIDA BUILDING CODES